

VERDERAIR

VA50 metallic

Description

The VA50 metallic double diaphragm pumps are excellent pumps for use in a wide range of applications across many industries. The reliability of those pumps and especially the air valves, have been proven in many industries since many years. The pumps are available in 3 different materials for the pump body and 7 different materials for the diaphragms. This makes it possible to select the best solution for your application.

Your benefits

- Easy to install, operate and maintain
- Less downtime
- Free of air lubrication
- Non-stalling air valve
- Can run-dry without damage
- Dry self-priming



Technical data				
Weight [kg]	Fluid & air section	AA	26,3	
		SA	50,3	
		IA	59	
		SS	61	
Max. suction lift [mwc]		Dry	2,5	
		Wet	5,5	
Temperature [°C]	Fluid section	Internals		
	A, S, I	BN, GE, HY, SP, TO	5	65
	A, S, I	TF, VT	5	93
Max. Particle size [mm]			6,3	
Max. recommended viscosity (mPas)			20000	

Code VA50 No.1 No.2 No.3 No.4. No.5 No.6 No.7

No.1 Fluid section

- ⊗ A = Aluminium
- ⊗ I = Cast Iron
- ⊗ S = Stainless Steel

No.2 Air section

- A = Aluminium
- S = Stainless Steel

No.3 Check valve seats

- BN = Buna-N
- GE = Geolast
- HS = Hardened Stainless Steel
- HY = Hytrel (TPE)
- SP = Santoprene

- SS = Stainless Steel
- VT = Viton (FKM)

No. 4 Check valve balls

- AC = Acetal
- BN = Buna-N
- GE = Geolast
- HS = Hardened Stainless Steel
- HY = Hytrel (TPE)
- SP = Santoprene
- TF = Teflon
- VT = Viton (FKM)

No.5 Diaphragms

- BN = Buna-N

- GE = Geolast
- HY = Hytrel (TPE)
- SP = Santoprene
- TF = PTFE/Santoprene 2 piece
- TO = PTFE/EPDM overmolded
- VT = Viton (FKM)

No. 6 Connections

- TB = Threated BSP, 2"
- TN = Threated NPT, 2"
- FC = Flanged DIN/ANSI, DN50

No. 7 Options

- OO = Standard
- EX = Extended
- RE = Remote

EXAMPLE PUMP TYPE

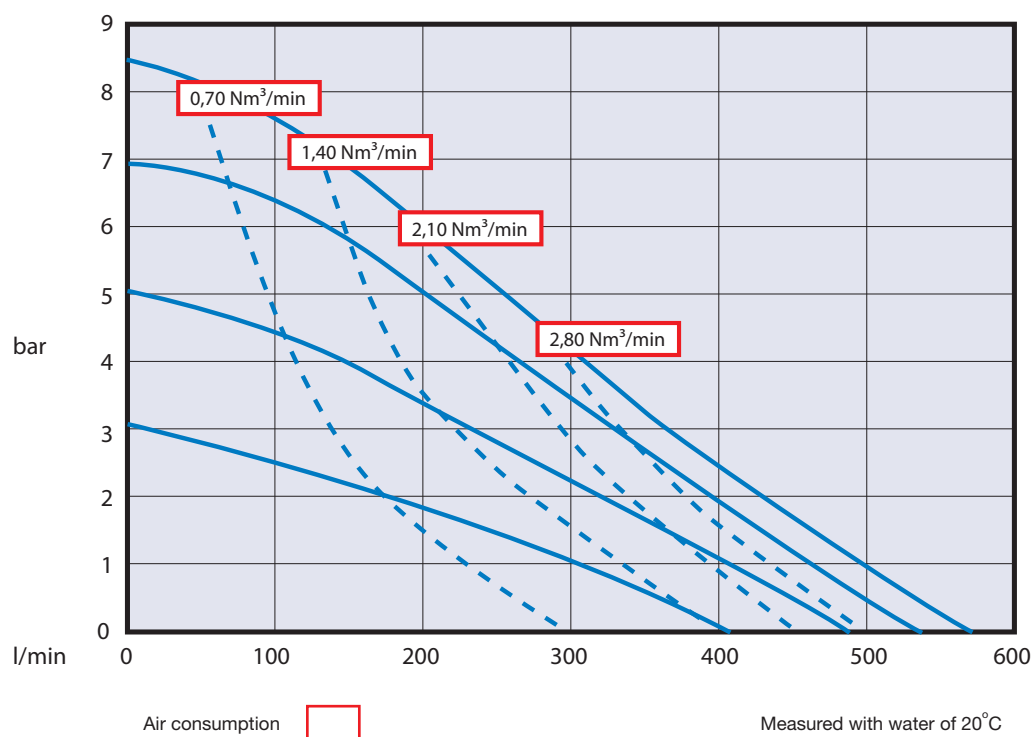
VA50AA SS BN BN TB OO

NOTE not all combinations are available

⊗ II 2 GD c IIC T4

VERDERAIR

VA50 metallic



VERDERAIR

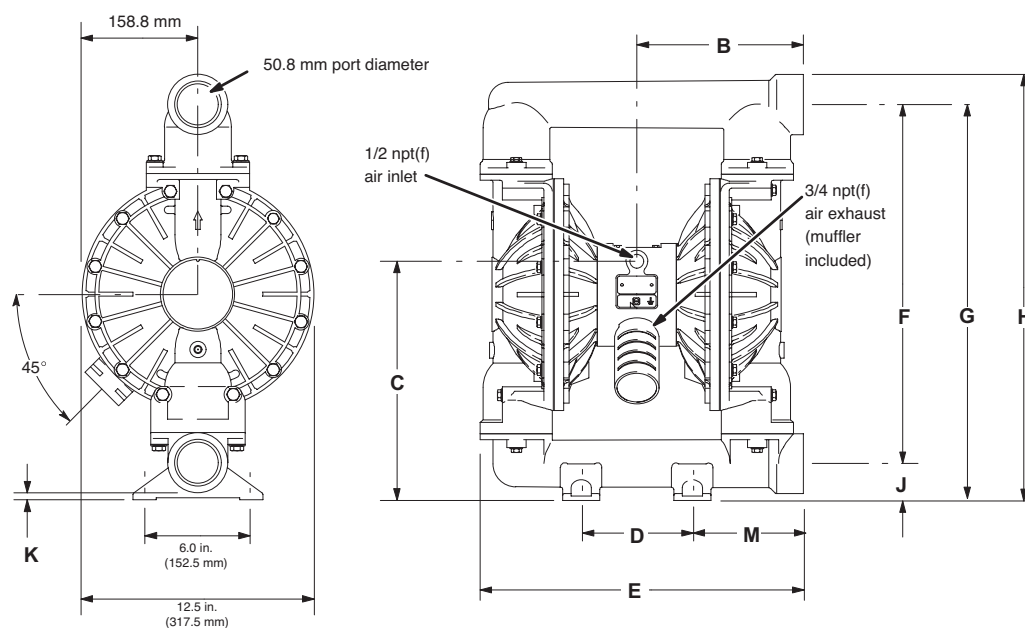
VA50 metallic



Dimensions in mm					
	Aluminium	Aluminium Extended *	Stainless steel (threated connections)	Stainless steel (flanged connections)	Cast Iron
B	229	231	28	221	245
C	328	328	385	437	327
D	152	152	165	165	152
E	443	442	459	459	469
F	506	581	565	565	491
G	557	632	631	681	542
H	598	673	668	757	578
J	51	51	64	114	51
K	10	10	24	/	14
L	152	152	152	279	152
M	152	152	146	147	178

* Aluminium extended pump matches the inlet to outlet dimensions of Wilden and Aro aluminium pumps.
This will help for ease of installation during upgrades.

Dimensions B, C, F, G, H and M can vary by up to 1/4 in. (6.3 mm) depending on the seat and diaphragm material fitted in the pump.



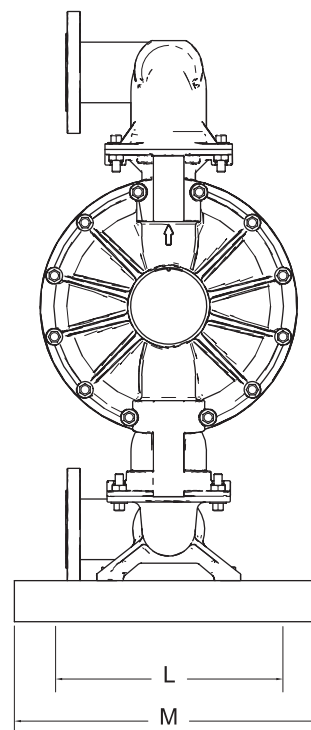
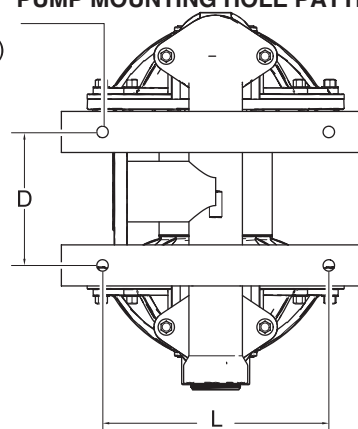
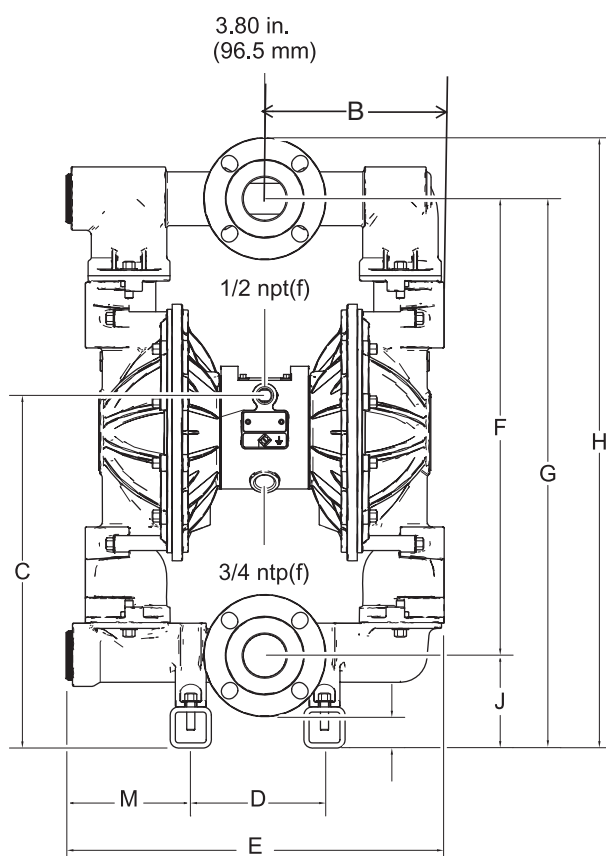
VERDERAIR

VA50 metallic

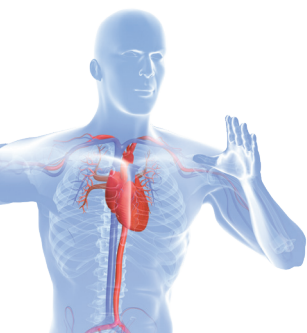


Dimensions B, C, F, G, H and M can vary by up to 1/4 in. (6.3 mm) depending on the seat and diaphragm material fitted in the pump.

PUMP MOUNTING HOLE PATTERN
4X 0.56 in. (14.2 mm)



110-VA-19_Datasheets_VA50MET_2019_EU



1300 1 GLOBAL
sales@globalpumps.com.au
globalpumps.com.au

Find your local supplier at www.verderair.com

For construction, installation and floor mounting drawings
please contact your local authorised Verderair® distributor.

VERDER
passion for pumps