



A BETTER SLURRY PUMP EXPERIENCE

SLURRY PRO[®]





SLURRYPRO ORIGINATED FROM A FIRM BELIEF THAT YOUR SLURRY PUMP EXPERIENCE COULD AND SHOULD BE BETTER

In response to industry feedback and frustration with service and response times, SlurryPro has introduced a customer-centric focus and revolutionised the end user experience.

The core management team bring years of experience from the Australian and South American mining industry. This tough and unforgiving environment was the perfect birth place for a range of pumps focusing on superior wear life and reduced lifetime costs. We focus on the vital need to reduce downtime in our key markets of mining, chemicals and mineral processing.

Our range includes horizontal and vertical centrifugal slurry pumps, all designed for use in the heaviest duty applications such as mill discharge, process plant and tailings applications. They are also widely used in sand washing and recycling applications, as well as specialist areas such as difficult food washing and other abrasive processes.

We understand that reducing downtime relies on rapid and cost effective parts availability. With this in mind, we have invested heavily in stock within our distribution companies, leading to the fastest quoting and delivery times in the industry.

In short, if you're looking for a better slurry pump experience, including superior wear life, reduced lifetime cost and ease of ongoing maintenance there is quite simply no alternative to SlurryPro.

UPGRADE WITH INTERCHANGEABLE TECHNOLOGY

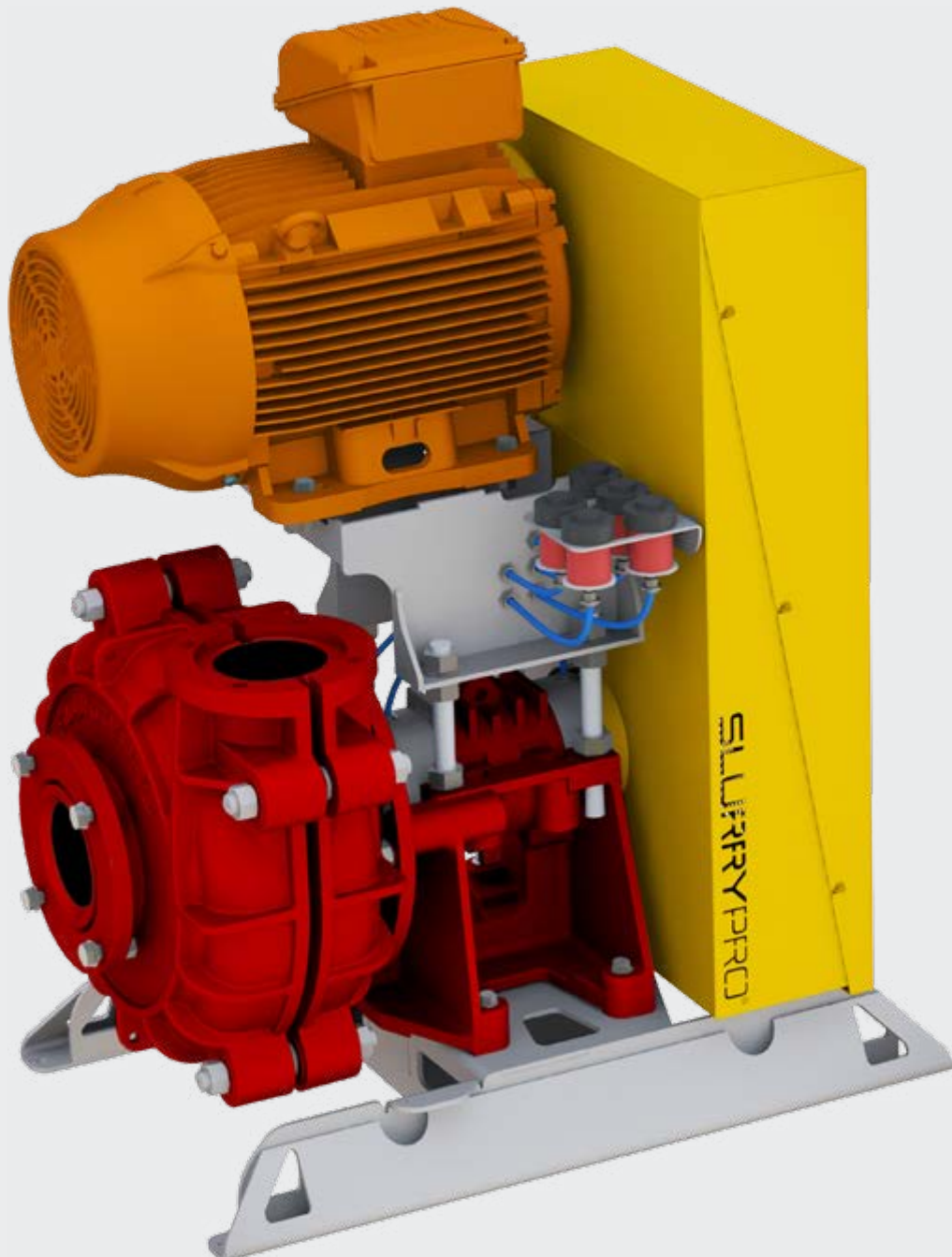
SlurryPro is a heavy duty, proven range of horizontal and vertical slurry pumps in a wide range of sizes, available with both high chrome and different grades of rubber wearing parts. The SlurryPro pump and spares range allows you to continue using your current pump and pipe work configuration.

A BETTER SLURRY PUMP EXPERIENCE

SLURRYPRO'S PASSION FOR IMPROVING WEAR LIFE AND CUSTOMER EXPERIENCE IS GREATLY DEMONSTRATED IN THE DESIGN OF THE NEW BUILT-UP SLURRYPRO PUMPS.

Design improvements and increased safety features have been at the forefront of our engineers thinking. The new build-up is lighter than the previous version yet just as robust and with no change to the overall integrity of the base. A lighter construction has been achieved by a change in the building methods used.

The introduction of modular design and the improvements in the way SlurryPro is designed and manufactured means that assembly time is also greatly reduced, thus reducing lead time. While bespoke designs can take time, we also now have a library of designs in place which allows us to begin manufacturing a new build-up quicker than ever before.





SLURRYPRO AUTOMATIC GREASER

Did you know that one of the most common reasons for pump failure is due to lack of regular lubrication?

All new SlurryPro built-up pumps include provision for an automatic greasing system as standard. Once fitted, this ensures consistent reliable lubrication of the bearings and seals for maximum service life. Manual greasing leads to both over and under-greasing due to inconsistent or infrequent application. Over-greasing leads to overheating, waste, pollution and premature failure. Under-greasing leads to wear, premature repairs and high repair costs.

SlurryPro Automatic Greaser pots are available individually and as part of a kit. The kit includes a bracket which can hold up to five pots of grease. Thanks to the bracket's powerful magnetism fitting it to the pump is a quick and simple procedure with no requirement for screws or tools.



UNIVERSAL MOTOR MOUNT

Our new motor mount has been designed to accommodate many motor sizes, which means a different sized motor can be put on the pump without any further engineering. This also speeds up the manufacturing process as pumps can be prepared in advance of confirmation of the final specification. This additionally allows for changes to the pump at a later date with minimum disruption.



BELT GUARD

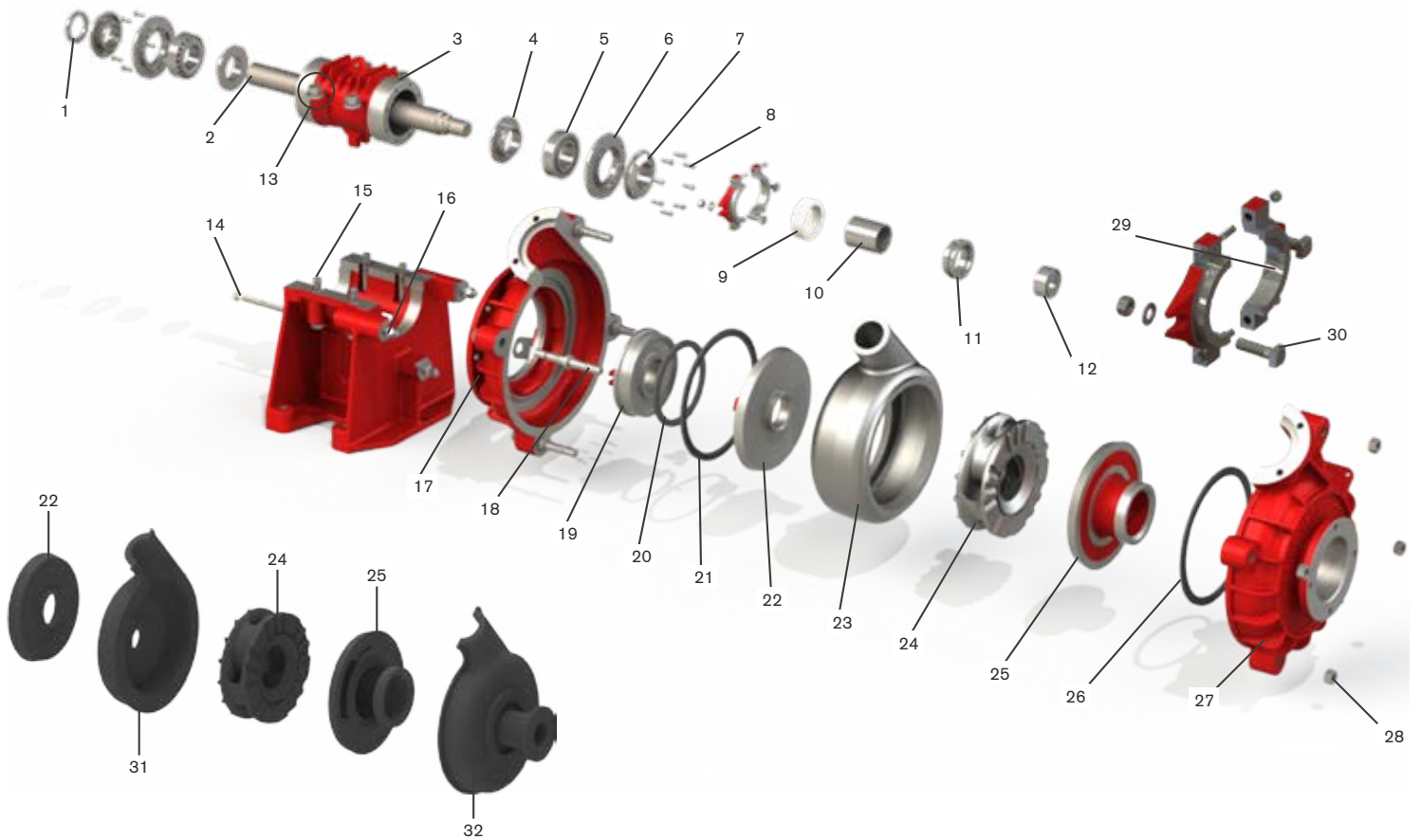
The health and safety of the user is always at the forefront of our thinking.

The new upgraded design includes an increased number of features such as the perforated belt guard. This can be removed by simply loosening six bolts and lifting the guard off allowing the user quick and easy access.

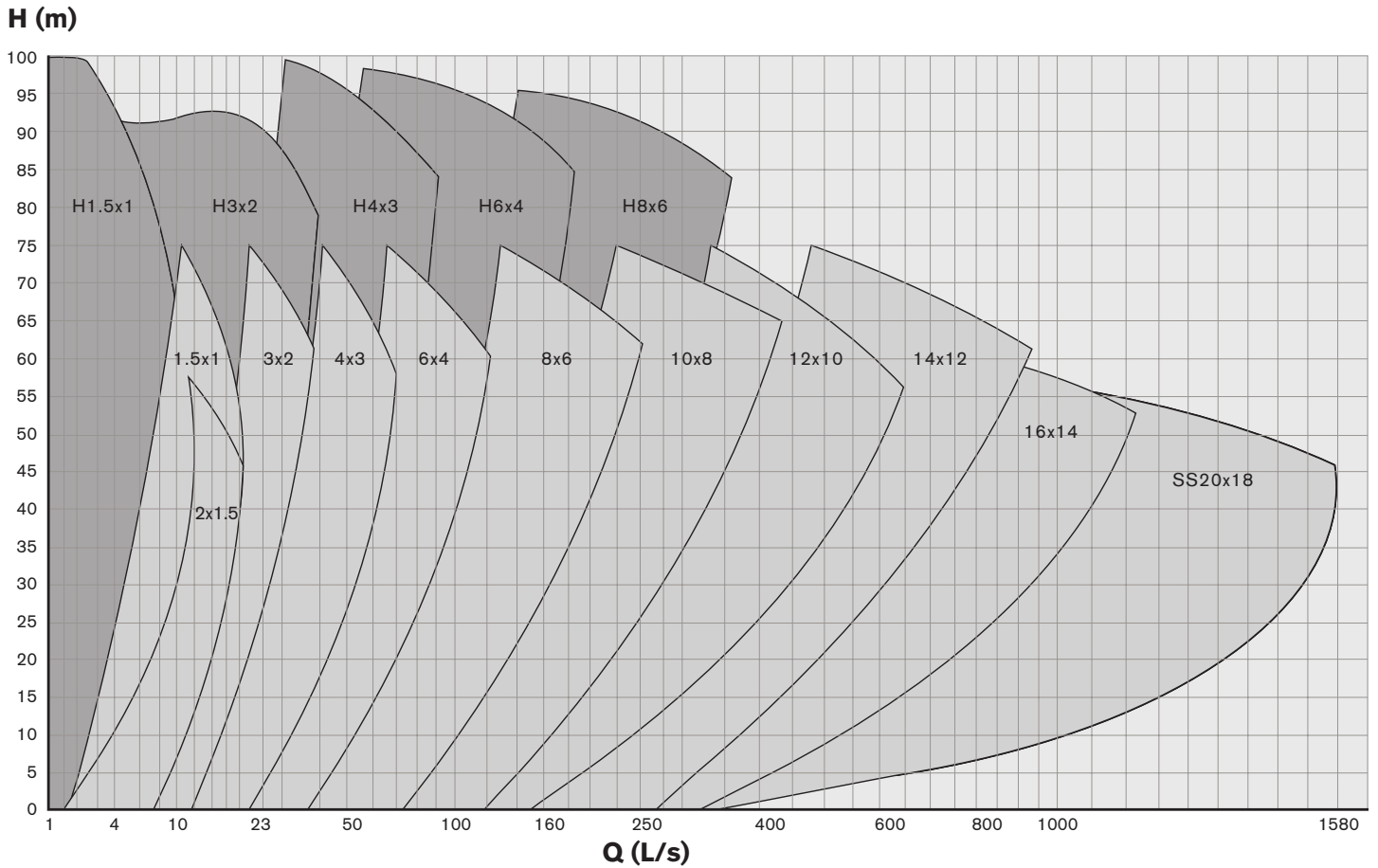
The build is fully compliant with guarding regulations.

EXPLODED VIEW

- | | | | |
|------------------------|------------------------|--|-------------------------------------|
| 1. Labyrinth lock nut | 9. Gland packing | 17. Frame plate | 24. Impeller (metal or rubber) |
| 2. Shaft | 10. Shaft sleeve | 18. Cover plate bolt | 25. Throatbush (metal or rubber) |
| 3. Bearing housing | 11. Lantern restrictor | 19. Stuffing box | 26. Volute seal |
| 4. Grease retainer | 12. Shaft spacer | 20. Seal | 27. Cover plate |
| 5. Bearing | 13. Clamp washer | 21. Volute seal | 28. Cover plate nut |
| 6. End cover | 14. Adjusting screw | 22. Frame plate liner insert (metal or rubber) | 29. Gland assembly |
| 7. Labyrinth | 15. Clamp bolt | 23. Volute liner | 30. Gland bolt |
| 8. End cover screw set | 16. Frame plate stud | | 31. Frame plate liner |
| | | | 32. Frame plate cover |



CURVES HORIZONTAL



The selection chart should be used as a basic guide only. This chart indicates the range and quantity of flow available from pumps with standard impellers. It can also, however, be used to obtain a preliminary pump selection providing the user is able to estimate the quantity of slurry to be pumped and the developed head required.

SAVE WATER, SAVE MONEY

Did you know the minimum amount of flush water required for a 3" slurry pump is ...

15 L/min

900 L/hr

21,600 L/day

7,884,000 L/year

Save water and money with the flushless SlurryPro Elite mechanical seal



MECHANICAL SEALS

MECHANICAL SEALS ARE THE MOST EFFECTIVE SEALING ARRANGEMENTS FOR SLURRY PUMPS

A mechanical seal consists of two parts, one section is fixed to the shaft, the other fixed to the stationary pump housing. The interface of these two components is the mechanical seal. One of the sections will be fixed in place, while the other will be pushed up to it using a spring-loaded fixing. This allows a tiny amount of liquid, called the fluid film, to flow into the minute space between these two surfaces, creating a seal, but also providing the needed lubrication and cooling.

This liquid between the two faces of the seal can either come from the fluid being pumped or from an external source. There will be some leakage into the dry area of the pump, but as the gap is so small (as narrow as one micron) this will be virtually undetectable.

ADVANTAGES OF USING MECHANICAL SEALS

- cost savings from the reduction in wear to pump parts
- a reduction in downtime because repairs and parts are needed less often
- a reduction in the liquid needed for cooling
- the prevention of any discernible leakage of the pumped liquid.

The main disadvantage of mechanical seals is their much higher purchase price. However, this is offset by lower running costs and the elimination of any costs associated with leakage. Slurry pumps can be supplied fitted with mechanical seals, or they can easily be retrofitted.

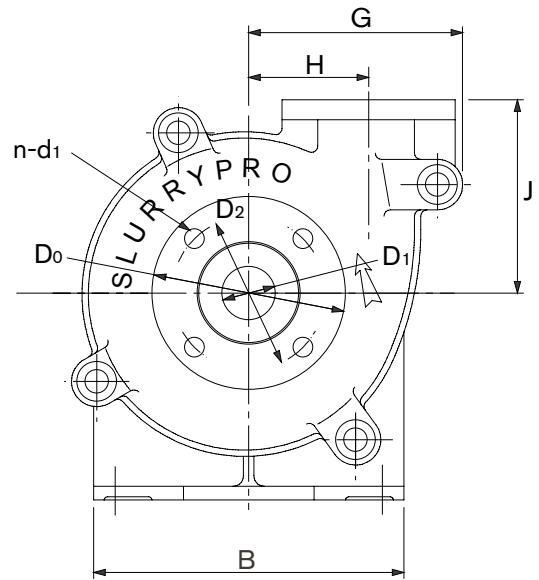
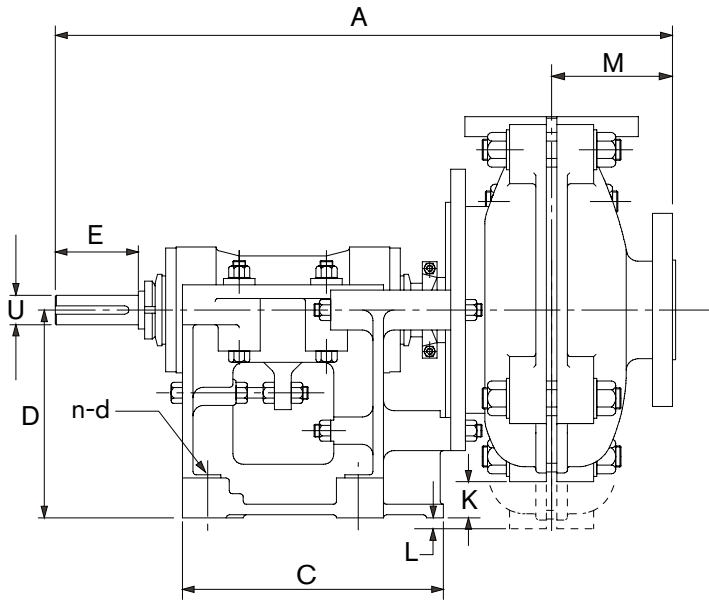
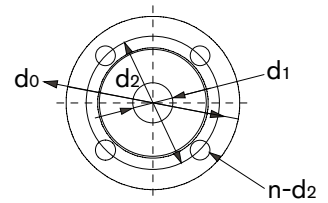
SLURRYPRO MECHANICAL SEALS

SlurryPro Mechanical Seals are available as both single and double seals and are designed to meet the arduous requirements of slurry applications. Large radial clearances and advanced multi-spring design give improved seal face loading and longer seal life. They are supplied as a complete cartridge to ensure they are delivered in pristine condition.

SlurryPro Mechanical Seals have been developed and produced by a leading mechanical seal manufacturer. This means you have confidence the are getting is pump designed for your industry, fitted with a seal from a trusted global mechanical seal manufacturer. A winning combination!



SPECIFICATIONS HORIZONTAL



| TYPE | FRAME | A | B | C | D | U | KEY SIZE | E | G | H | J | K | L | M | n-d | SUCTION FLANGE | | | | DISCHARGE FLANGE | | | | APPROX MASS kg | |
|----------|-------|------|------|------|-----|-----|----------|-----|------|-----|------|-----|-----|-----|-------|----------------|-----|-----|--------|------------------|-----|-----|--------|----------------|--------|
| | | | | | | | | | | | | | | | | D0 | D1 | D2 | n-d1 | d0 | d1 | d2 | n-d2 | Metal | Rubber |
| SS1.5X1 | 5 | 583 | 295 | 248 | 197 | 28 | 8X7 | 79 | 181 | 98 | 171 | 46 | - | 106 | 4-Ø14 | 152 | 38 | 114 | 4-Ø16 | 152 | 25 | 114 | 4-Ø16 | 90 | 75 |
| SS2X1.5 | 5 | 596 | 295 | 248 | 197 | 28 | 8X7 | 79 | 203 | 114 | 184 | 33 | - | 115 | 4-Ø14 | 184 | 51 | 146 | 4-Ø19 | 165 | 38 | 127 | 4-Ø19 | 100 | 85 |
| SS3X2 | 10 | 777 | 406 | 311 | 254 | 42 | 12X8 | 122 | 238 | 138 | 210 | 67 | - | 156 | 4-Ø19 | 216 | 76 | 178 | 8-Ø19 | 203 | 51 | 165 | 4-Ø19 | 200 | 160 |
| SS4X3 | 10 | 848 | 406 | 311 | 254 | 42 | 12X8 | 121 | 292 | 149 | 262 | 20 | - | 192 | 4-Ø19 | 279 | 102 | 235 | 4-Ø22 | 229 | 76 | 191 | 4-Ø22 | 300 | 230 |
| SS4X3 | 20 | 948 | 492 | 364 | 330 | 65 | 18X11 | 152 | 292 | 149 | 262 | 100 | - | 192 | 4-Ø22 | 279 | 102 | 235 | 4-Ø22 | 229 | 76 | 191 | 4-Ø22 | 380 | 280 |
| SS6X4 | 20 | 1028 | 492 | 364 | 330 | 65 | 18X11 | 150 | 406 | 229 | 338 | 12 | - | 228 | 4-Ø22 | 337 | 152 | 292 | 4-Ø22 | 279 | 102 | 235 | 4-Ø22 | 660 | 420 |
| SS6X4 | 30 | 1188 | 622 | 448 | 457 | 80 | 22X14 | 220 | 406 | 229 | 338 | 139 | - | 228 | 4-Ø29 | 337 | 152 | 292 | 4-Ø22 | 279 | 102 | 235 | 4-Ø22 | 810 | 620 |
| SC6X4 | 40 | 1240 | 622 | 448 | 457 | 85 | 22X14 | 222 | 435 | 229 | 460 | 49 | - | 230 | 4-Ø29 | 337 | 152 | 292 | 4-Ø22 | 279 | 102 | 235 | 4-Ø22 | 1110 | 980 |
| SS8X6 | 30 | 1318 | 622 | 448 | 457 | 80 | 22X14 | 222 | 551 | 318 | 460 | - | 62 | 292 | 4-Ø29 | 406 | 203 | 356 | 8-Ø22 | 368 | 152 | 324 | 8-Ø22 | 1510 | 980 |
| SS8X6 | 45 | 1518 | 857 | 635 | 610 | 100 | 28X16 | 279 | 551 | 318 | 460 | 91 | - | 304 | 4-Ø29 | 406 | 203 | 356 | 8-Ø22 | 368 | 152 | 324 | 8-Ø22 | 1650 | 1160 |
| SI8X6 | 55 | 1569 | 857 | 635 | 610 | 120 | 32X18 | 290 | 615 | 318 | 615 | 16 | - | 304 | 4-Ø29 | 406 | 203 | 356 | 8-Ø22 | 368 | 152 | 324 | 8-Ø22 | 2920 | 2480 |
| SS10X8 | 45 | 1650 | 990 | 705 | 610 | 100 | 28X16 | 279 | 667 | 419 | 635 | - | 12 | 334 | 4-Ø48 | 502 | 254 | 445 | 8-Ø29 | 432 | 203 | 375 | 8-Ø29 | 2650 | 1970 |
| SS10X8 | 65 | 1753 | 1150 | 780 | 650 | 120 | 32X18 | 280 | 667 | 419 | 635 | 28 | - | 334 | 4-Ø48 | 502 | 254 | 445 | 8-Ø29 | 432 | 203 | 375 | 8-Ø29 | 3450 | 3210 |
| SC10X8 | 65 | 1755 | 1150 | 780 | 650 | 120 | 32X18 | 280 | 760 | 419 | 735 | - | 69 | 334 | 4-Ø48 | 502 | 254 | 445 | 8-Ø29 | 432 | 203 | 375 | 8-Ø29 | 5020 | 4530 |
| SI10X8 | 80 | 2136 | 1150 | 1040 | 650 | 150 | 36X20 | 350 | 760 | 419 | 735 | - | 70 | 334 | 4-Ø48 | 502 | 254 | 445 | 8-Ø29 | 432 | 203 | 375 | 8-Ø29 | 5850 | 5150 |
| SS12X10 | 45 | 1721 | 990 | 705 | 610 | 100 | 28X16 | 279 | 749 | 464 | 673 | - | 104 | 381 | 4-Ø29 | 527 | 305 | 470 | 12-Ø25 | 527 | 254 | 470 | 12-Ø25 | 4080 | 3040 |
| SS12X10 | 65 | 1827 | 1150 | 780 | 650 | 120 | 32X18 | 280 | 749 | 464 | 673 | - | 64 | 381 | 4-Ø48 | 527 | 305 | 470 | 12-Ø25 | 527 | 254 | 470 | 12-Ø25 | 4470 | 3730 |
| SS12X10 | 80 | 2204 | 1150 | 1040 | 650 | 150 | 36X20 | 350 | 749 | 464 | 673 | - | 64 | 381 | 4-Ø48 | 527 | 305 | 470 | 12-Ø25 | 527 | 254 | 470 | 12-Ø25 | 5200 | 4570 |
| *SC12X10 | 80 | 2190 | 1150 | 1040 | 650 | 150 | 36X20 | 350 | 950 | 464 | 800 | - | 130 | 382 | 4-Ø48 | 527 | 305 | 470 | 12-Ø25 | 527 | 254 | 470 | 12-Ø25 | 7520 | 6800 |
| *SI12X10 | 80 | 2242 | 1150 | 1040 | 650 | 150 | 36X20 | 350 | 950 | 464 | 800 | - | 119 | 420 | 4-Ø48 | 527 | 305 | 470 | 12-Ø25 | 527 | 254 | 470 | 12-Ø25 | 8280 | 7050 |
| SS14X12 | 45 | 1777 | 990 | 705 | 610 | 100 | 28X16 | 279 | 944 | 629 | 832 | - | 264 | 406 | 4-Ø29 | 585 | 356 | 521 | 12-Ø25 | 552 | 305 | 495 | 12-Ø25 | 5900 | 4180 |
| SS14X12 | 65 | 1879 | 1150 | 780 | 650 | 120 | 32X18 | 280 | 944 | 629 | 832 | - | 224 | 406 | 4-Ø48 | 585 | 356 | 521 | 12-Ø25 | 552 | 305 | 495 | 12-Ø25 | 5490 | 4870 |
| *SI14X12 | 80 | 2336 | 1150 | 1040 | 650 | 150 | 36X20 | 350 | 1100 | 629 | 930 | - | 248 | 485 | 4-Ø48 | 585 | 356 | 521 | 12-Ø25 | 552 | 305 | 495 | 12-Ø25 | 12020 | 10500 |
| SS16X14 | 85 | 2320 | 1460 | 1050 | 900 | 150 | 36X20 | 350 | 1048 | 660 | 889 | - | 84 | 451 | 4-Ø48 | 705 | 406 | 641 | 12-Ø35 | 673 | 356 | 610 | 12-Ø29 | 10560 | 7860 |
| *SI16X14 | 85 | 2424 | 1460 | 1050 | 900 | 150 | 36X20 | 350 | 1300 | 660 | 1035 | - | 140 | 540 | 4-Ø48 | 705 | 406 | 641 | 12-Ø35 | 673 | 356 | 610 | 12-Ø29 | 16280 | 14470 |
| SS20X18 | 85 | 2475 | 1460 | 1050 | 900 | 150 | 36X20 | 350 | 1414 | 940 | 1230 | - | 417 | 580 | 4-Ø48 | 900 | 508 | 800 | 12-Ø42 | 900 | 460 | 800 | 12-Ø42 | 17760 | 12890 |
| *SC20X18 | 85 | 2475 | 1460 | 1050 | 900 | 150 | 36X20 | 350 | 1600 | 940 | 1230 | - | 305 | 580 | 4-Ø48 | 900 | 508 | 800 | 12-Ø42 | 900 | 460 | 800 | 12-Ø42 | 20450 | 14150 |
| *SI20X18 | 85 | 2475 | 1460 | 1050 | 900 | 150 | 36X20 | 350 | 1600 | 940 | 1230 | - | 305 | 580 | 4-Ø48 | 900 | 508 | 800 | 12-Ø42 | 900 | 460 | 800 | 12-Ø42 | 21340 | 17230 |

#All dimensions (mm) ##Dimensions are subject to change without notice *Pump sizes have additional mounting feet on the casing

SLURRYPRO VERTICAL

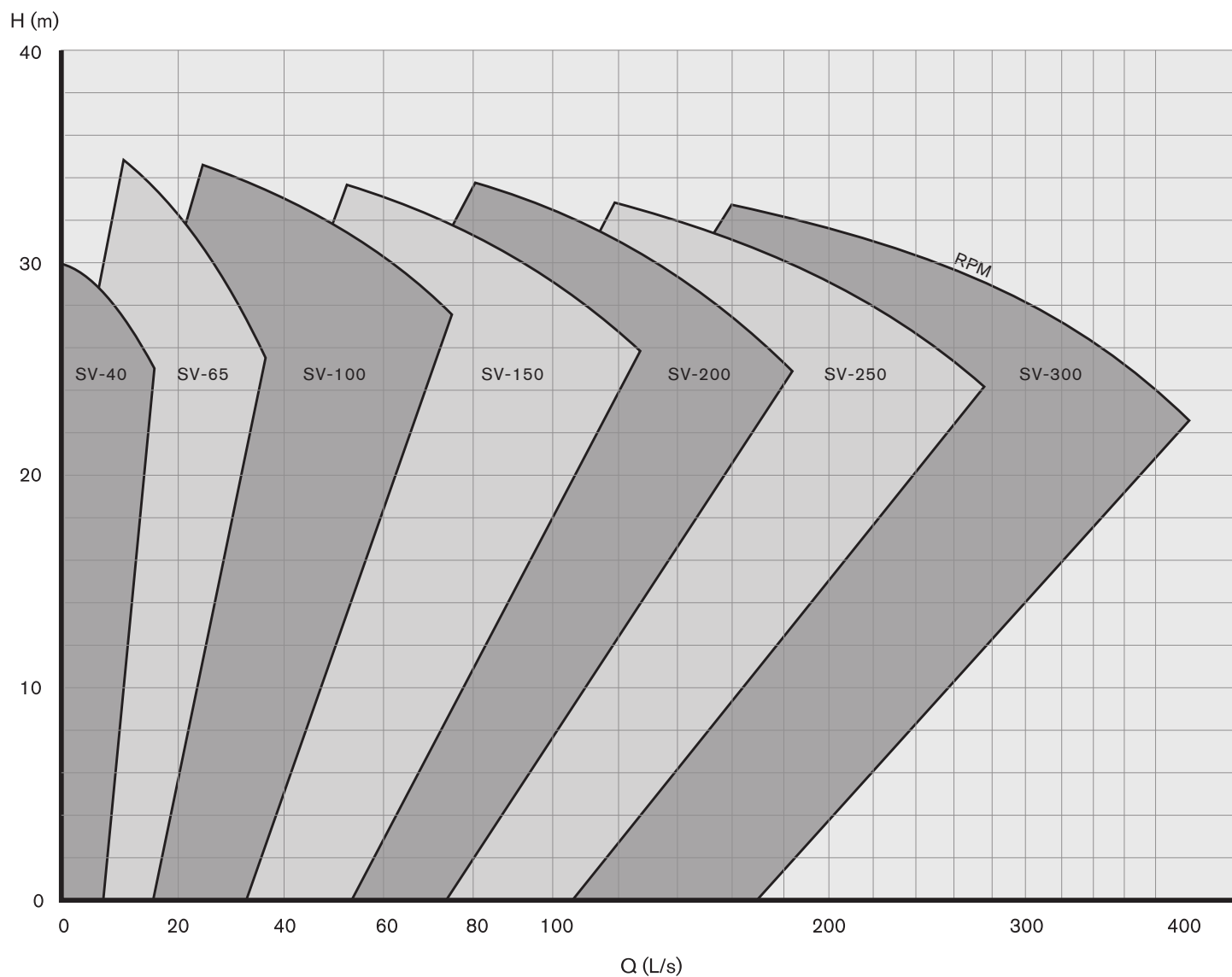
This heavy duty range features a cantilever shaft design that eliminates any bearings or seals in the fluid end. An ideal pump for heavy slurry wash down and spill duties.

A full range of material options including complete elastomer lined pumps and hard metal options for corrosive and abrasive media duties. Pumps in all sizes can be configured with a range of column lengths and impeller designs.

Ideal for corrosive coarse particles and high concentrations of slurry and are widely used in the metallurgical, mining and coal industries.

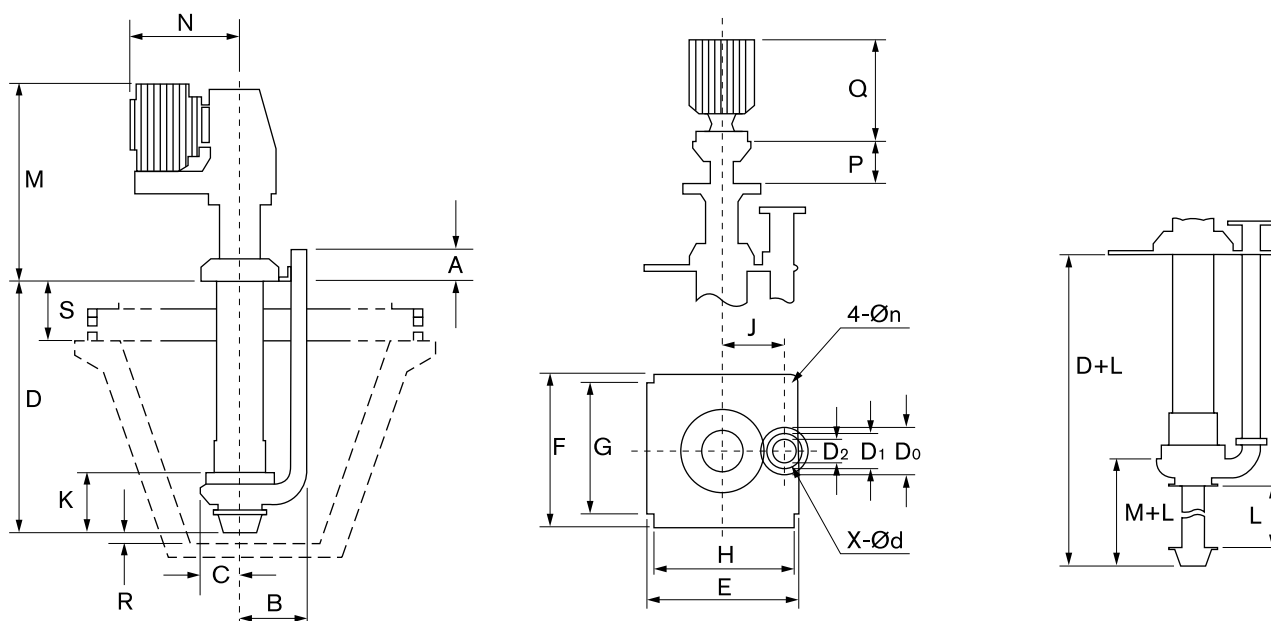


CURVES VERTICAL



The selection chart should be used as a basic guide only. This chart indicates the range and quantity of flow available from pumps with standard impellers. It can also, however, be used to obtain a preliminary pump selection providing the user is able to estimate the quantity of slurry to be pumped and the developed head required.

SPECIFICATIONS VERTICAL



| PUMP | | A | B | C | D | | E | F | G | H | J | Øn | K | NOTE: These are max dimensions based on largest motor sizes | | | | PUMP WEIGHT | S | PUMP WEIGHT (kg) | | | |
|--------|-------|-----|------|-----|-----------------|--|------|------|------|------|-----|----|-----|---|------|-----|------|-------------|-----|------------------|-----|-----|--------|
| TYPE | FRAME | | | | STANDARD COLUMN | OPTIONAL COLUMN | | | | | | | | M | N | P | Q | | | ØD0 | ØD2 | ØD1 | X-ØD |
| SV15 | 06 | 137 | 285 | 153 | 900 | 1200, 1800, 2000, 2500 | 500 | 500 | 450 | 450 | 205 | 18 | 174 | 1113 | 675 | 248 | 629 | 285 | 280 | 127 | 40 | 98 | 4-Ø16 |
| SV15R | | 140 | 265 | 175 | | | | | | | | | | 1113 | | | | | | | | | |
| SV25 | 07 | 227 | 399 | 231 | 1200 | 1200, 1500, 2200, 2500, 2800 | 680 | 680 | 620 | 620 | 285 | 18 | 265 | 1390 | 794 | 290 | 681 | 432 | 350 | 178 | 65 | 140 | 4-Ø19 |
| SV25R | | 230 | 380 | 260 | | | | | | | | | | 1396 | | | | | | | | | |
| SV40 | 22 | 265 | 538 | 317 | 1500 | 1200, 1800, 2000, 2400, 2700, 3000, 3200 | 1000 | 870 | 800 | 930 | 400 | 22 | 393 | 1803 | 1020 | 416 | 960 | 867 | 350 | 229 | 100 | 191 | 8-Ø19 |
| SV40R | | 266 | 435 | 332 | | | | | | | | | | 1809 | | | | | | | | | |
| SV60 | 26 | 390 | 670 | 365 | 1800 | 1500, 2100, 2800, 3200, 3400, 3600 | 1100 | 1100 | 1030 | 1030 | 500 | 28 | 475 | 2186 | 1200 | 476 | 1011 | 1737 | 350 | 280 | 150 | 241 | 8-Ø22 |
| SV60R | | 395 | 670 | 400 | | | | | | | | | | 2194 | | | | | | | | | |
| SV80 | 26 | 450 | 805 | 440 | 1800 | 1500, 2100, 2800, 3200, 3600 | 1300 | 1200 | 1100 | 1200 | 600 | 28 | 550 | 2191 | 1300 | 476 | 1011 | 2800 | 350 | 343 | 200 | 298 | 8-Ø22 |
| SV80R | | 450 | 805 | 440 | | | | | | | | | | 2191 | | | | | | | | | |
| SV100 | 36 | 500 | 500 | 470 | 2100 | 1800, 2400, 2800, 3200, 3600 | 1750 | 1450 | 1350 | 1650 | 700 | 48 | 685 | 2191 | 1750 | 561 | 1246 | 3700 | 400 | 406 | 250 | 362 | 12-Ø25 |
| SV100R | | 500 | 500 | 470 | | | | | | | | | | 2572 | | | | | | | | | |
| SV120 | 36 | 500 | 1170 | 559 | 2100 | 1800, 2400, 2800, 3200, 3600 | 1750 | 1450 | 1350 | 1650 | 700 | 48 | 700 | 2572 | 1750 | 561 | 1246 | 4000 | 400 | 483 | 300 | 432 | 12-Ø25 |
| SV120R | | 400 | 1090 | 630 | | | | | | | | | | 2476 | | | | | | | | | |

NOTE: L size: 300, 600, 900, 1200, 1800 R dimension range: 50-300 mm *All dimensions (mm) **Dimensions subject to change without notice

CASE STUDY LEAD SMELTER, SOUTH AUSTRALIA

PLANT

This plant is an integrated multi-metals recovery facility with the flexibility to process a wide range of lead rich concentrates and smelting industry by-products.

Located approximately 200 km north of Adelaide, South Australia, the smelter has been in constant operation for more than 120 years. There is an adjacent dedicated port facility where concentrates are received, with final products dispatched by road and rail.

This plant is one of the world's largest primary lead smelting facilities, its competitive position is enhanced by its ability to produce a range of metals and treat a variety of by-products, together with its focus on supplying the growing markets of Asia, especially China. The plant is linked to another smelter through flows of by-products such as paragoethite and leach products.

TECHNOLOGY

Lead smelter, transitioning to top submerged lance furnace, sinter plant, blast furnace and lead refinery. Slag fuming leach, electrowin copper, solvent extraction/electrowin.

PRODUCTS

Commodity grade lead, copper cathode, silver and gold ore and sulphuric acid.

PUMPS

SlurryPro SS3x2-500010: High-chrome liners and impeller fitted with Sealtek Mechanical Seal, coupled to a 5.5 kW 4-pole electric motor.

Thickener recycle pump - thickener underflow

Conditioning discharge pump 'A'
- conditioned milk of lime pump 'A'

Conditioning discharge pump 'B'
- conditioned milk of lime pump 'B'



SPARES

We stock a large range of pump parts and spares suitable for our own brands, as well as other manufacturers, including but not limited to Techniflo, Verderflex, Grundfos, Mono, Southern Cross, Warman, Flygt, Inoxpa and Lowara.

REPAIRS

Our technical service division in South Australia allows us to provide in-house engineering, specialised technical support, maintenance, service and repairs of horizontal and vertical slurry pumps.





Providing pump solutions to industry, globally

Intrax is a global leader in specialist pumping equipment for difficult and challenging industrial applications. We are best known for excellence in bringing innovative and cost-saving ideas to our customers as well as offering unrivalled levels of customer service and response times.

Our combined wealth of experience and technical know-how in highly sophisticated applications allows us to work closely with engineering teams on large-scale projects across the globe firmly establishing us as their trusted partner.



SLURRYPRO® is part of the Intrax Group

Expertise

Intrax tackles aggressive and abrasive pumping challenges that conventional pump manufacturers shy away from. An in-depth cross-organisational knowledge of aggressive fluid handling and an association with leading polymer developers and foundries globally provides a level of expertise disproportionate to the individual companies and brand.

Understanding

The Intrax companies and brands have truly evolved to relieve customer pain points and hence bring a refreshingly different approach to the rigid stance often taken by market incumbents. Intrax products have also evolved intelligently, influenced by individual customer's demands, and this progress is on-going.

Energy

Our partners often comment on the energy and motivation within our companies and how enjoyable it makes their interactions with us. We think that this is because of the ethos of our brilliant, highlytrained workforce who have been recruited to deliver cutting-edge solutions without the prejudices of a lifetime of offering conventional and often outdated technology.

Innovation

A relentless drive to improve on the status quo of high value pump installations. Intrax has a culture of market disruption bringing value to customers, ranging from small, yet significant, product modifications which address regional challenges, to in-depth R&D and new product designs.

SLURRYPRO[®]



Asia Pacific Distribution

Global Pumps
SA, VIC, QLD, NSW, NT
T: +61 1300 145 622
www.globalpumps.com.au

SLURRYPRO.COM