



**Global  
Pumps**

**PRODUCT  
OVERVIEW**





**Global Group**

of companies





---

## WHY GLOBAL PUMPS?

Established in 1977, Global Group specialises in providing innovative solutions for difficult and challenging pumping applications with an uncompromising focus on reliability.

### **Expert advice and rapid response**

We provide expert advice you can trust, with a responsive 'can-do' attitude, efficient after-sales service and nationwide support. We believe in establishing a long-term relationship with our clients.

### **Extensive range delivered worldwide**

We manufacture and import an extensive range of pumps for difficult and challenging applications that are global market leaders in their field.

### **Our facilities**

Our head office incorporates a large, modern warehouse stocked with a huge range of specialised pumps, spares and accessories and a fully equipped service and fabrication workshop, complete with gantry cranes and an AS9906:2018 compliant pump test bay capable of testing flows to 400 L/s.

### **Service capacity**

Our engineering division with qualified personnel and fully equipped site service vehicles give us the capacity to handle complete turn-key projects, including mechanical and electrical installations, total refurbishments, site repairs and scheduled maintenance programs.

Our service and repair capabilities also cater for other manufacturers' brands, including, but not limited to: Grundfos, Mono, Southern Cross, Sulzer, JWC, Flygt, Lowara and Warman.

### **Quality guarantee**

We are committed to upholding the highest standards of quality and customer satisfaction and are accredited to ISO 9001:2016 and ISO:45001.

We only source products from global manufacturers who share our same dedication to quality and reliability.

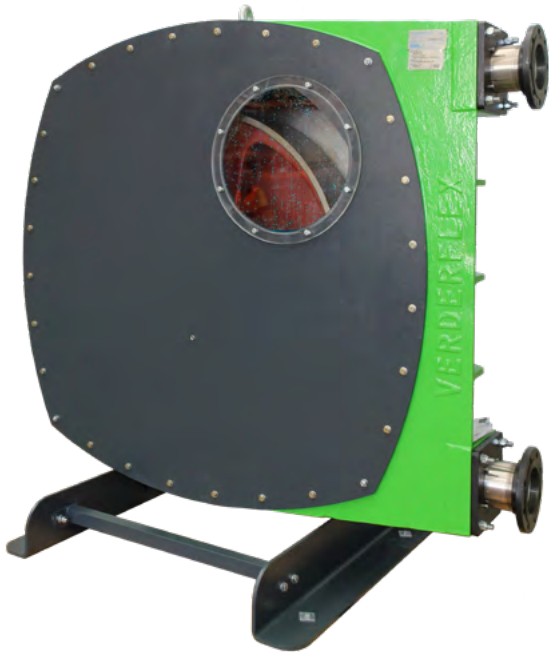


---

## Verderflex peristaltic hose pumps

Peristaltic pumps are ideal for corrosive and abrasive high solids slurries and chemical reagent dosing.

For the very best in peristaltic pump technology, Verderflex offers the largest hose pump range in the world with over 20 pump sizes. Optional non-metallic flange connections available for pumping aggressive and corrosive liquids.



### Features

- flows up to 150 m<sup>3</sup>/hr, pressures to 16 bar
- dry running, self-priming and reversible
- long-life hose technology
- tough mechanical seal gearbox protection
- low power and low pulsation designs
- no valves or seals in the process liquid
- pump slurries up to 80% solids
- 20 pump sizes and four hose materials stocked in Australia



---

## Verderflex peristaltic tube pumps

Peristaltic metering pumps for accurate dosing of chemicals, food additives and pharmaceutical lotions. Particularly suited to chemicals with entrained gas or liquids containing suspended particles.

Applications include laboratory trials, water treatment, chemical dosing, pharmaceutical batching, food flavours and brewing additives.

### Features

- flows up to 17 L/min, 1020 L/hr
- pressures to 7 bar
- highly accurate stepper controlled dosing versions
- preset dosing with flow rate displayed on touchscreen
- stackable design
- remote control options including Wi-Fi, SCADA, Modbus, analogue
- 4000:1 turndown ratio
- only one wearing part – the tube element





---

## SlurryPro centrifugal slurry pumps

SlurryPro heavy duty centrifugal pumps are available with high-chrome, rubber or polyurethane liners for moving abrasive liquids and slurries.

Complete range of horizontal and vertical column pumps available in many configurations, featuring radial split casings allowing quick changing of replaceable liners.



### Features

- removable cartridge-type bearing assembly
- flows up to 1600 L/s, heads up to 100 m
- range of different sealing systems
- low maintenance costs
- interchangeable wearing parts with the majority of other slurry pump brands
- automatic greaser optional



---

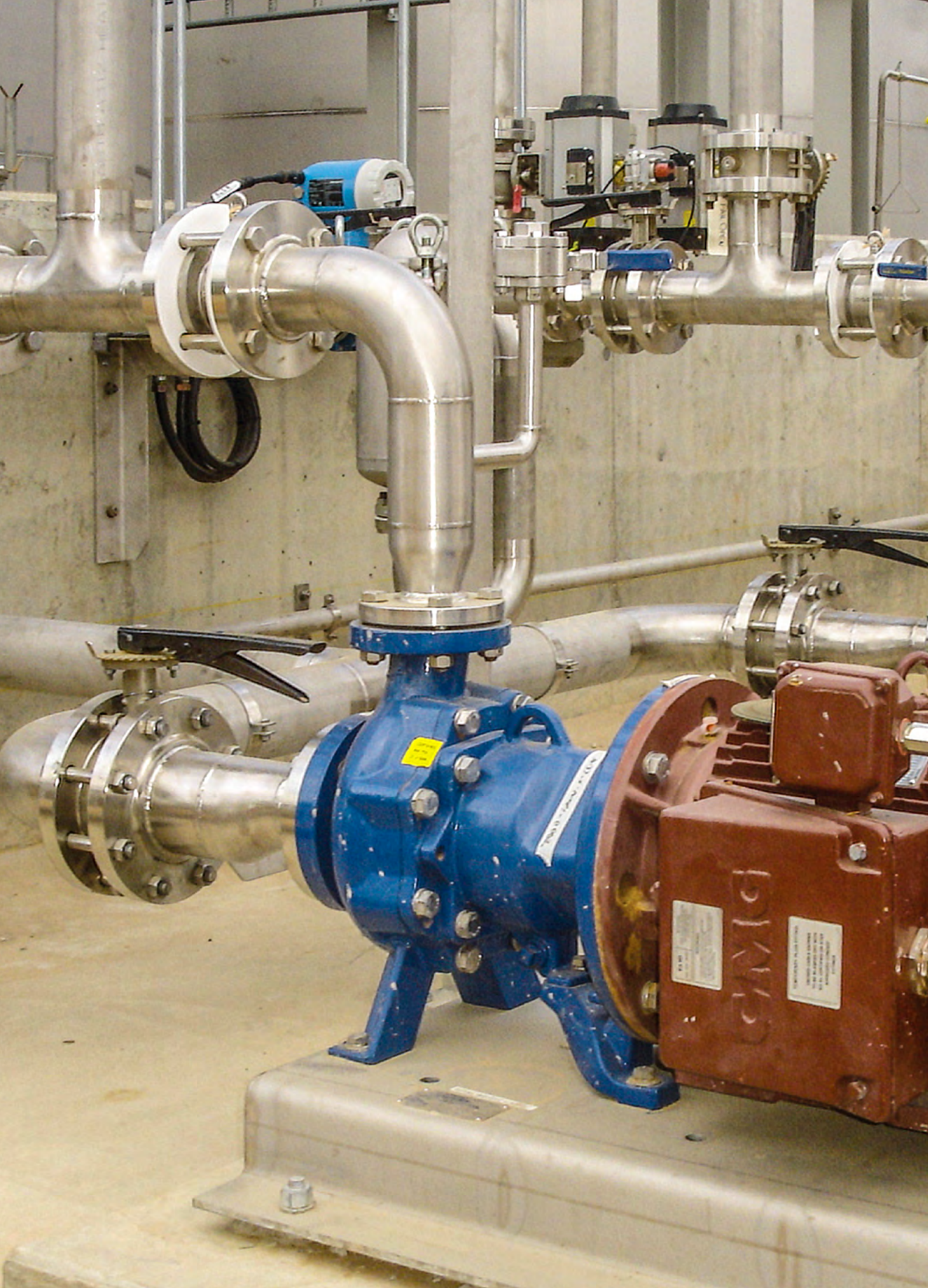
## SlurryPro Elite mechanical seal

SlurryPro Elite mechanical seals are designed to handle the most difficult applications and processes.

The SlurryPro Elite Style 600 is a true flushless mechanical seal which incorporates a conical stuffing box design, giving you a significant increase in service life without the requirement for flushing liquid.

The sleeveless design allows for greater radial run-out of the shaft. With no seal parts inside the stuffing box, slurry is allowed to circulate freely, further reducing the chance of seal failure.







## Techniflo chemical pumps

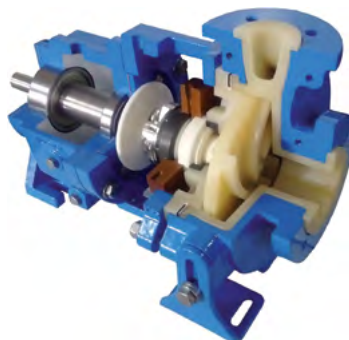
Techniflo non-metallic centrifugal pumps are designed to reliably and safely handle corrosive and aggressive chemicals.

Heavy duty construction and available in either sealed or seal-less magnetic drive, these units are ideal for pumping any corrosive or hazardous liquids and have the ability to handle contaminated liquids with suspended solids.



### Features

- flows up to 400 m<sup>3</sup>/hr, heads to 148 m
- temperatures range from -70 °C to 121 °C
- PP or PVDF wetted parts
- magnetic drive or single and double mech seals
- long or close-coupled pumps or engine driven
- dry run protection available
- over 50 pump sizes stocked in Australia



## Toro process pumps



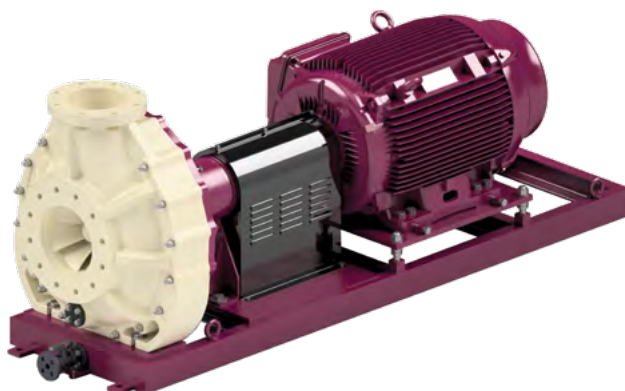
Toro ANSI and ISO centrifugal process pumps are the robust solution for heavy duty pumping applications in a wide range of industries including chemical, petrochemical and primary metals.

Toro pumps utilise a rugged bearing pedestal design with ductile iron, 316 stainless steel or duplex wet-ends and cutting edge mechanical seal designs to provide a cost effective solution for harsh chemicals and other hazardous process solutions.

### Features

- constructed from ductile iron, 316 stainless steel and duplex metals including alloy 20, Hastalloy and titanium
- flows up to 1000 m<sup>3</sup>/hr and heads up to 150 m
- liquid temperatures from -210 °C to 260 °C
- advanced mechanical seal design adapted for tough applications
- seamless latest generation coatings available for very corrosive fluids or abrasives

## Affetti non-metallic chemical process pumps



Affetti non-metallic centrifugal pumps for corrosive and aggressive liquids, aliphatic or aromatic solvents and sea water. These pumps are available in a wide range of materials and conform to DIN and ISO standards.

### Features

- PP, PEHD, PVC, PVDF, PTFE and fibreglass resin construction
- single or double mechanical seals
- heads up to 120 m
- flows up to 2000 m<sup>3</sup>/hr
- conforms to either DIN/EN 22858 (ISO 2858) or ASME/ANSI B73.1M



---

## Verderair air-operated diaphragm pumps

The most efficient range of double diaphragm pumps delivering a consistent, reliable flow for all applications.

Thanks to their unique design, Verderair air-operated diaphragm pumps are able to handle very abrasive, viscous and sanitary products.



### Features

- self-priming and variable flow
- can run dry without damage
- available in many different materials
- unique lube-free, anti-stall air valve
- flows up to 1200 L/min
- 3A, FDA and EHEDG approved designs available
- high pressure unit available
- hazardous rated
- 5 year warranty

---

## ProMInent metering and instrumentation



State-of-the-art electronic diaphragm metering pumps for high accuracy chemical dosing in all industries. Suitable for pH, ORP and chlorine dosing measurement and control.

Complete package treatment systems including control instrumentation available.

### Features

- chemically inert materials
- adjustable stroke rates
- digital display of flow rate
- manual or external electronic control, including analogue and SCADA versions available
- Ex d rated versions
- alarm outputs available for low flow and low chemical level

---

## Techniflo drum pumps



Drum emptying pumps to suit a wide variety of chemicals, hazardous liquids and various drum sizes. Available with a range of accessories including flow meters and dispensing nozzles.

### Features

- metallic and non-metallic versions
- flows up to 200 L/min
- electric or pneumatic drive motors
- lightweight and safe
- electric units have low-voltage release switches
- Ex rated motor option
- 200 L drums and 1000 L IBCs
- batching and dispensing options available

---

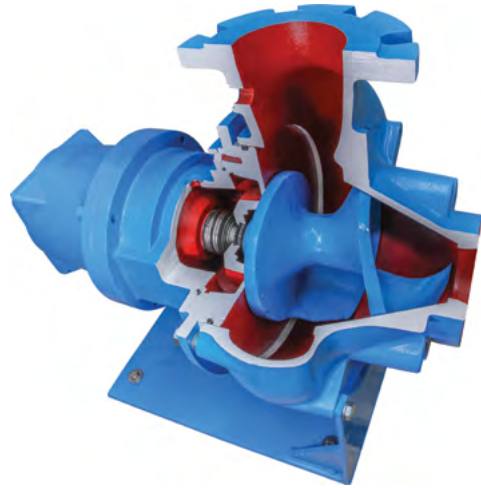
## Verderhus screw centrifugal

Verderhus screw centrifugal pumps combine the features of centrifugal and positive displacement pumps. The open impeller allows large solids such as wet wipes and rubbish to be easily pumped, whilst the screw design is ideal for high solid contents or viscous liquids and produces a high efficiency, low NPSHr pump, lowering both energy use and ownership costs.

316 stainless steel, cast iron and other material options and pump variants available.

### Applications

- mining
- chemical processing
- industrial processing
- food and beverage
- wastewater treatment



---

## Submersible pumps

Extensive range of submersible pumps.

Ideal for applications such as mine dewatering, stormwater transfer, sewage removal and tank recirculation.

### Features

- cast iron or stainless steel options
- automatic level control and dry run protection
- three-phase or single-phase option
- corrosion and wear resistant options
- agitator for heavy sand slurries
- available with seal failure detection system



---

## Endurance fire pumps

Complete packaged fire pump systems which achieve Australian Standard 2941-2013 and the intent of American Fire Pump Standard NFPA20.

### Features

- diesel or electric motors available
- built to fit custom plant rooms
- various pumps available depending on application
- flexible design approach
- testing to guarantee the duty-points as required by the code
- 3 year warranty on Endurance heavy duty services



---

## Toro self-priming trash pumps



The TORO self-priming trash pumps are designed to move heavy and viscous fluids containing abrasive particles and large, soft solids. There are a wide variety of sizes and high head versions available, in cast iron, 316 stainless steel or duplex standard construction.

### Features

- sizes from 2"-8"
- 2 vane open-type impeller
- operates over a range of speeds allowing multiple duty points
- substantial bearings and drive shaft
- oil lubricated SIC mechanical seal

---

## Helical rotor pumps



Helical rotor pumps are non-shearing and are capable of transferring a variety of liquids without causing any change or harm to their quality. They are also suitable for hygienic food and beverage applications, such as butter, crushed grapes and yeast chunks.

### Features

- flows up to 200 m<sup>3</sup>/hr
- Cardan universal joint design versions
- available in a range of special materials
- pressures to 72 bar
- close-coupled and bare shaft versions
- low shear – ideal for polymers
- able to handle up to 1,000,000 cps

---

## Elastomeric coating

MetaLine Series 700 is an elastomeric product that combines the efficiency and performance of vulcanised rubber coatings and the simple processing of polymeric with the resistance of duplex steel.

The cartridge packaged polymer is mixed and sprayed simultaneously with the MetaLine Applicator S-700. The result is a hydrodynamic resistant protective coating that provides unparalleled erosion resistance. Its durability is several times higher in comparison with conventional wear linings.

MetaLine Series 700 technology is unique because of its simple spray application process, extraordinary surface smoothness and resultant improvement in flow dynamics. Efficiency increases of up to 3.5% have been proven.

The MetaLine process is suitable for the protection of complete metal components as well as the repair of existing rubber linings and parts.



### Applications

- mining and mineral processing
- marine
- defence
- food processing
- construction
- water supply



---

## Helical rotor and open throat

Open throat helical rotor pumps designed for easy mounting underneath grape crushers, hoppers and other food storage vessels.

### Features

- screw feed
- low shear pump action
- flows to 500 m<sup>3</sup>/hr
- pressures to 72 bar
- ability to handle a range of wetted materials including solids
- able to handle high viscosity product
- aseptic design available



---

## Inoxpa centrifugal

Close-coupled, stainless steel centrifugal pumps are exceptionally compact, efficient and economical. Ideally suited for hygienic requirements.

### Features

- open/helicoidal impeller options
- full range of mechanical seals available
- self-priming/multistage options
- flows to 250 m<sup>3</sup>/hr
- pressures to 10 bar



---

## Inoxpa lobe

Lobe pumps have a gentle pumping action which makes them suitable for fluids such as cream and cheese.

Made from 316 stainless steel with a highly polished finish, allows these pumps to be cleaned-in-place.

### Features

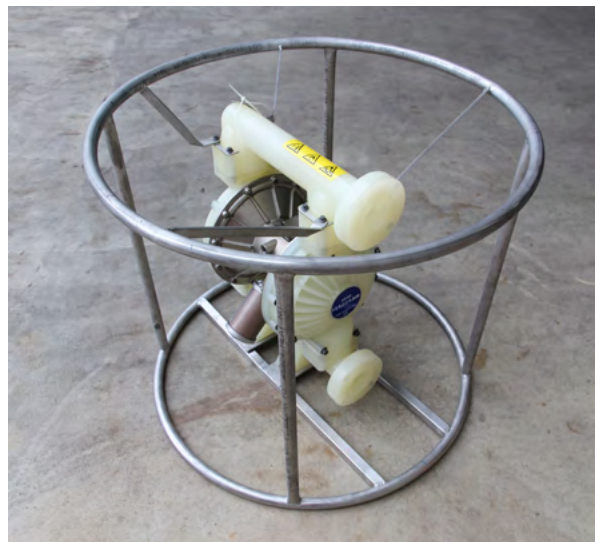
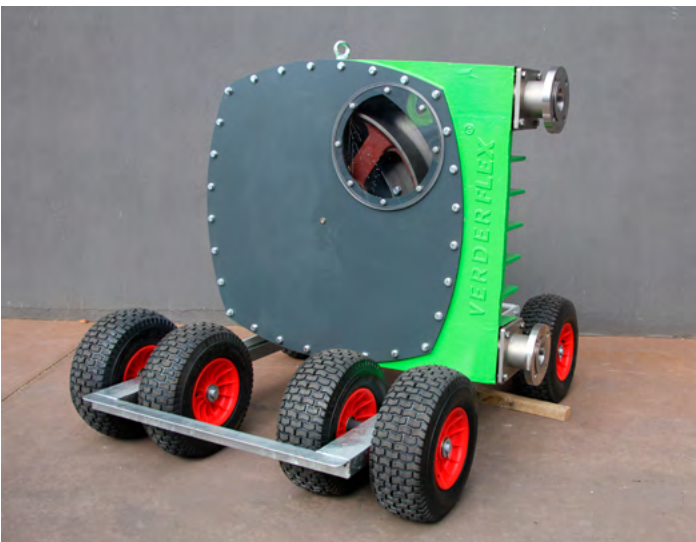
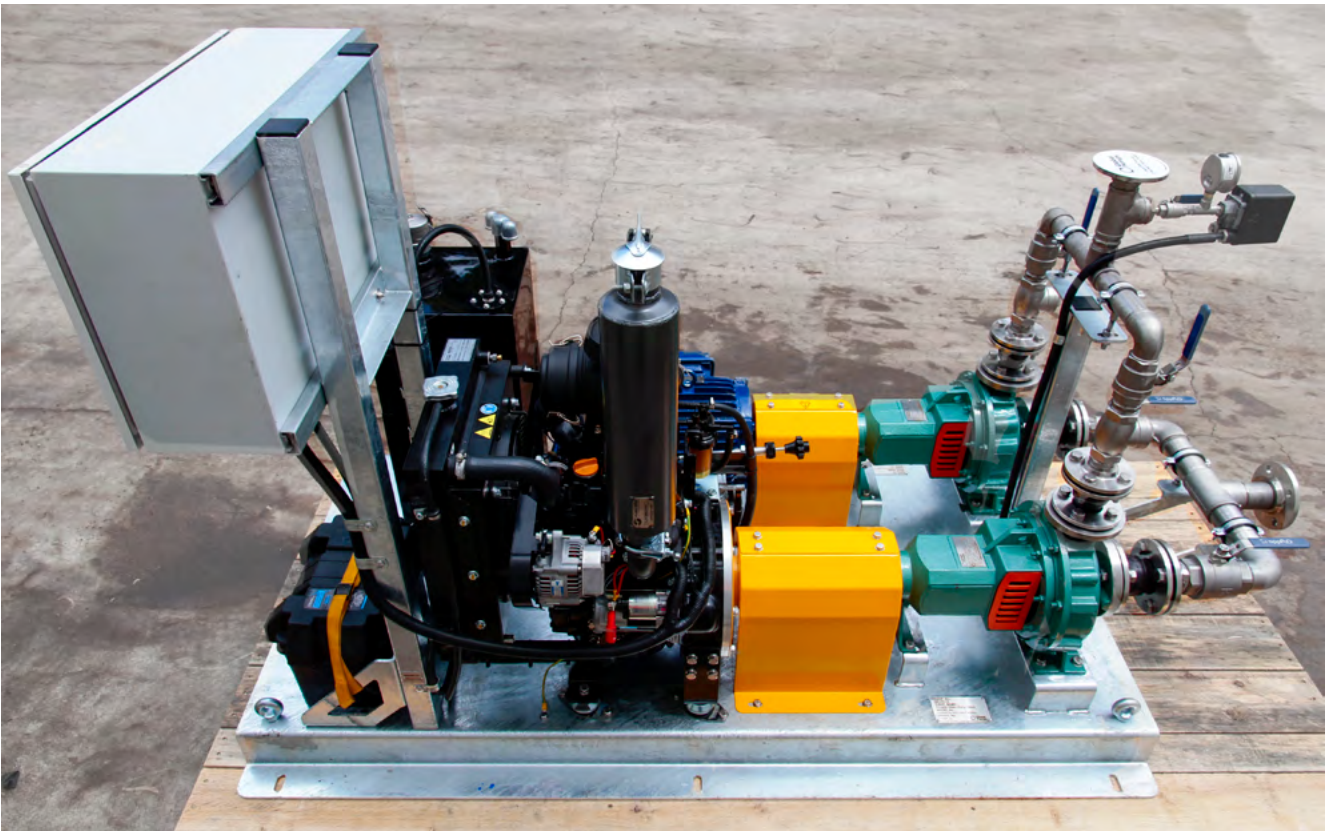
- positive displacement
- clean-in-place compatible
- available with in-built pressure release valve
- flows to 100 m<sup>3</sup>/hr
- pressures to 34 bar



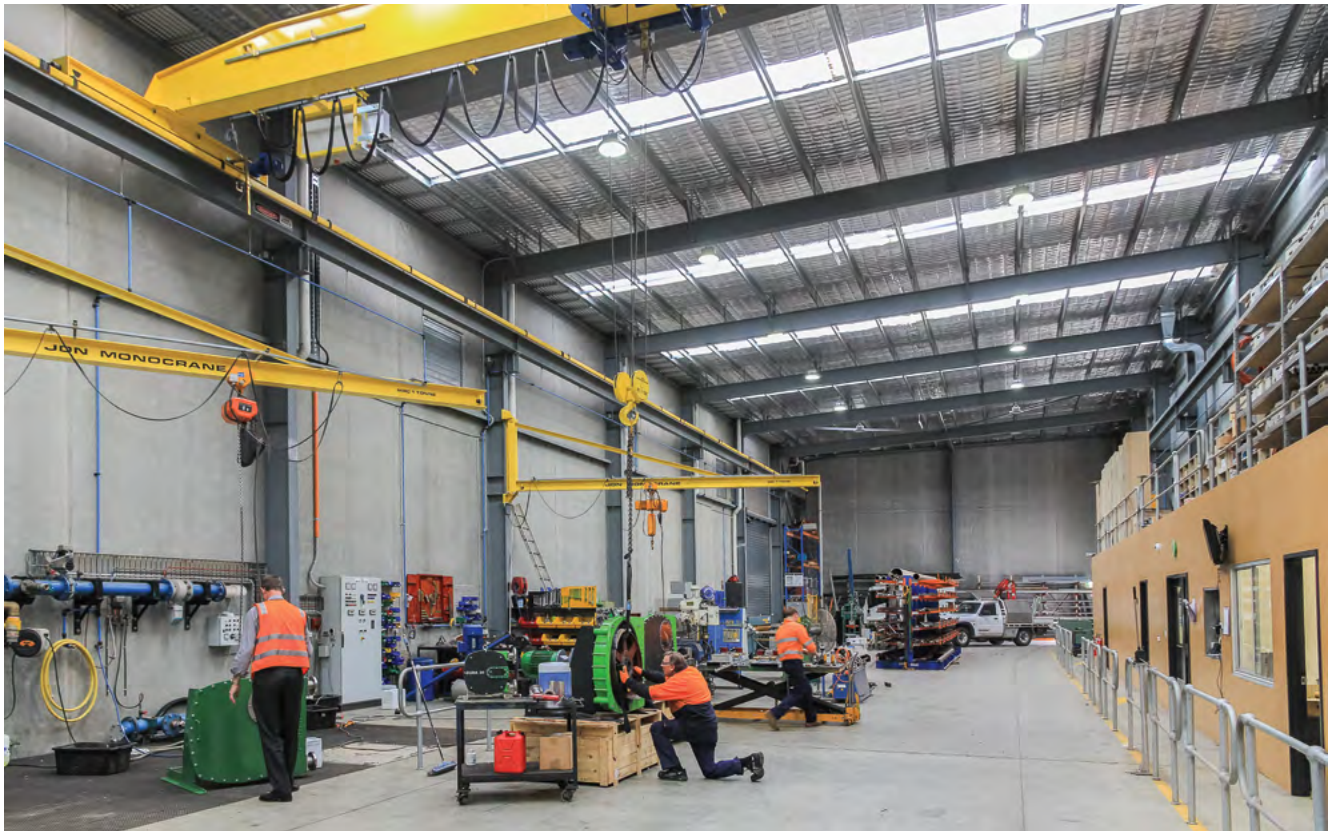
## CUSTOMISED OPTIONS







## MANUFACTURING & WORKSHOP



**Global Pumps provides quality engineered products and services to the mining and other industrial sectors, supported by state-of-the-art workshop facilities.**

The workshop allows us to provide in-house engineering, specialised technical support, maintenance, service, repairs, overhaul of horizontal and vertical slurry pumps, plus field service assistance.

Our service and repair capabilities also cater for other manufacturers' brands, including, but not limited to: Grundfos, Mono, Southern Cross, Sulzer, JWC, Flygt, Lowara and Warman. We offer a 12 month warranty on parts and 3 month warranty on all pump repairs.

Our SlurryPro and Verderflex pump ranges have parts and replacement pump interchangeability with other well-known manufacturers, which allows an alternate supply to the existing pump brand.

### WORKSHOP AND PLANT CAPABILITIES

<b>Lifting capacity</b>	1 x 10 T gantry crane, 1 x 5 T gantry crane, 2 x 1 T jib cranes
<b>Forklift</b>	1 x 3.5 T, 1 x 6.5 T
<b>Manufacturing facilities</b>	Machining, fabrication, assembly and sheet metal working bays
<b>Workshop</b>	1500 m <sup>2</sup>
<b>Wash bay</b>	Wash down bay; high pressure water cleaner with sediment and solids separator tank for contamination control
<b>Paint booth</b>	Specialist coating and spray painting booth
<b>Pump test facility</b>	Up to 400 L/s or up to 400 kW electrical and up to 1000 kW mechanical, to Australian standards
<b>Electrical</b>	Design, manufacturing and site installation
<b>Packages</b>	Multi-pump skids, containerised water treatment systems
<b>Site works</b>	2 x crane trucks for full site installation and commissioning



Providing pump solutions to industry, globally

Intrax is a global leader in specialist pumping equipment for difficult and challenging industrial applications. We are best known for excellence in bringing innovative and cost-saving ideas to our customers as well as offering unrivaled levels of customer service and response times.

Our combined wealth of experience of technical know-how in highly sophisticated applications has allowed us to work closely with the engineering teams on large-scale projects across the globe firmly establishing us as their trusted partner.

For further information, please visit our website: [intraxglobal.com](http://intraxglobal.com)

Our brands

**AUDEX**

**SLURRYPRO<sup>®</sup>**

**TECHNIFLO<sup>®</sup>**



**EXCEL**



**All PUMPS**  
ARGENTINA  
intelligent pump solutions

**Global Pumps**

